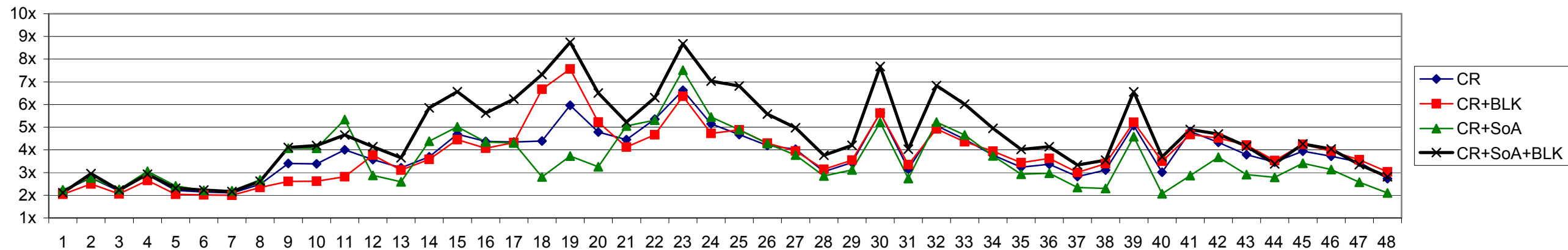
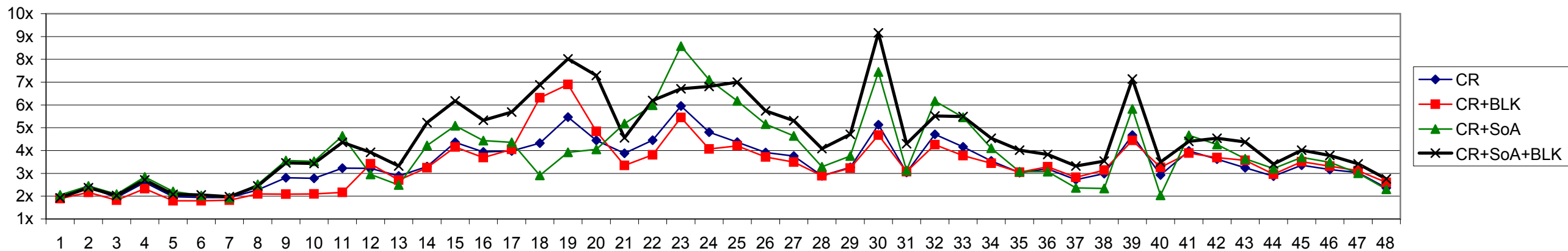


OBK vs BK: optimization breakdown (without SAT)



OBK vs BK: optimization breakdown (with SAT)



OBK vs BK: optimization breakdown (Core i3, 64-bit)

	instance	topo	# nodes	captype	CR	CR+SAT	CR+BLK	CR+BLK+SAT	CR+SoA	CR+SoA+SAT	CR+SoA+BLK	CR+SoA+BLK+SAT
1	/mid/denoise/penguin	2D/4C	22k	16-bit	2.19	1.98	2.04	1.89	2.24	2.05	2.11	1.93
2	/mid/denoise/house	2D/4C	66k	32-bit	2.77	2.39	2.50	2.16	2.76	2.45	2.95	2.38
3	/mid/stereo/tsukuba	2D/4C	111k	8-bit	2.19	1.94	2.06	1.83	2.26	2.09	2.23	2.02
4	/uwo/stereo/BVZ-tsukuba	2D/4C	111k	8-bit	2.90	2.60	2.65	2.33	3.05	2.84	2.93	2.72
5	/uwo/stereo/BVZ-sawtooth	2D/4C	165k	8-bit	2.21	1.98	2.04	1.79	2.41	2.21	2.31	2.08
6	/uwo/stereo/BVZ-venus	2D/4C	166k	8-bit	2.14	1.94	2.02	1.79	2.22	2.03	2.23	2.05
7	/mid/stereo/venus	2D/4C	166k	16-bit	2.10	1.93	2.00	1.82	2.20	1.93	2.16	1.98
8	/mid/stereo/teddy	2D/4C	169k	8-bit	2.48	2.27	2.34	2.10	2.68	2.52	2.62	2.45
9	/mid/segment/flower	2D/4C	270k	16-bit	3.40	2.81	2.60	2.09	4.07	3.57	4.11	3.46
10	/mid/segment/person	2D/4C	270k	16-bit	3.39	2.78	2.61	2.09	4.07	3.53	4.19	3.44
11	/mid/segment/sponge	2D/4C	307k	16-bit	4.00	3.23	2.82	2.17	5.34	4.64	4.66	4.36
12	/mid/photomontage/family	2D/4C	426k	32-bit	3.58	3.22	3.77	3.42	2.87	2.95	4.14	3.92
13	/mid/photomontage/panorama	2D/4C	514k	32-bit	3.21	2.88	3.11	2.71	2.60	2.49	3.65	3.32
14	/ctu/lazybrush/footman	2D/4C	593k	16-bit	3.69	3.30	3.58	3.25	4.38	4.22	5.85	5.23
15	/ctu/lazybrush/hmdman	2D/4C	593k	16-bit	4.69	4.36	4.45	4.15	5.02	5.09	6.57	6.18
16	/ctu/lazybrush/mangadinner	2D/4C	593k	16-bit	4.37	3.94	4.07	3.69	4.35	4.43	5.62	5.33
17	/ctu/lazybrush/mangagirl	2D/4C	593k	16-bit	4.34	3.98	4.32	4.05	4.31	4.36	6.24	5.69
18	/ctu/lazybrush/elephant	2D/4C	2370k	16-bit	4.39	4.33	6.67	6.32	2.80	2.91	7.32	6.88
19	/ctu/lazybrush/bird	2D/4C	2372k	16-bit	5.97	5.47	7.57	6.90	3.73	3.92	8.74	8.02
20	/ctu/lazybrush/doctor	2D/4C	2373k	16-bit	4.79	4.45	5.23	4.84	3.25	4.05	6.51	7.29
21	/uwo/shapefit/LB07-bunny-sml	3D/6C	806k	8-bit	4.45	3.88	4.13	3.35	5.05	5.18	5.23	4.56
22	/uwo/shapefit/LB07-bunny-med	3D/6C	6311k	8-bit	5.35	4.45	4.67	3.81	5.31	5.98	6.30	6.19
23	/uwo/seg3d/bone/bone_subxyz_subxy.n6c10	3D/6C	246k	8-bit	6.62	5.95	6.36	5.45	7.51	8.58	8.67	6.71
24	/uwo/seg3d/bone/bone_subxyz_subx.n6c10	3D/6C	492k	8-bit	5.14	4.81	4.73	4.07	5.45	7.10	7.03	6.81
25	/uwo/seg3d/bone/bone_subxyz.n6c10	3D/6C	983k	8-bit	4.68	4.37	4.88	4.20	4.89	6.18	6.82	7.00
26	/uwo/seg3d/bone/bone_subxy.n6c10	3D/6C	1950k	8-bit	4.19	3.91	4.29	3.71	4.28	5.15	5.58	5.74
27	/uwo/seg3d/bone/bone_subx.n6c10	3D/6C	3899k	8-bit	4.03	3.76	3.95	3.49	3.77	4.64	4.97	5.31
28	/uwo/seg3d/liver/liver.n6c10	3D/6C	4162k	8-bit	3.04	2.90	3.14	2.90	2.85	3.29	3.76	4.09
29	/uwo/seg3d/babyface/babyface.n6c10	3D/6C	5063k	8-bit	3.44	3.26	3.55	3.23	3.12	3.76	4.20	4.71
30	/uwo/seg3d/bone/bone.n6c10	3D/6C	7799k	8-bit	5.64	5.13	5.62	4.68	5.21	7.45	7.67	9.16
31	/uwo/seg3d/adhead/adhead.n6c10	3D/6C	12583k	8-bit	3.15	3.04	3.35	3.07	2.74	3.12	4.03	4.30
32	/uwo/seg3d/bone/bone_subxyz_subxy.n6c100	3D/6C	246k	8-bit	5.07	4.71	4.92	4.26	5.23	6.17	6.83	5.52
33	/uwo/seg3d/bone/bone_subxyz_subx.n6c100	3D/6C	492k	8-bit	4.46	4.16	4.35	3.78	4.66	5.46	6.02	5.49
34	/uwo/seg3d/bone/bone_subxyz.n6c100	3D/6C	983k	8-bit	3.77	3.55	3.94	3.44	3.73	4.11	4.95	4.54
35	/uwo/seg3d/bone/bone_subxy.n6c100	3D/6C	1950k	8-bit	3.24	3.03	3.43	3.05	2.93	3.07	4.02	4.02
36	/uwo/seg3d/bone/bone_subx.n6c100	3D/6C	3899k	8-bit	3.37	3.20	3.63	3.29	2.97	3.08	4.14	3.83
37	/uwo/seg3d/liver/liver.n6c100	3D/6C	4162k	8-bit	2.82	2.72	3.01	2.82	2.34	2.36	3.33	3.32
38	/uwo/seg3d/babyface/babyface.n6c100	3D/6C	5063k	8-bit	3.11	2.98	3.39	3.14	2.30	2.34	3.55	3.54
39	/uwo/seg3d/bone/bone.n6c100	3D/6C	7799k	8-bit	5.07	4.68	5.21	4.45	4.58	5.83	6.56	7.14
40	/uwo/seg3d/adhead/adhead.n6c100	3D/6C	12583k	8-bit	3.01	2.93	3.50	3.26	2.07	2.03	3.69	3.49
41	/uwo/seg3d/bone/bone_subxyz_subxy.n26c10	3D/26C	246k	8-bit	4.81	3.98	4.67	3.89	2.87	4.67	4.90	4.40
42	/uwo/seg3d/bone/bone_subxyz_subx.n26c10	3D/26C	492k	8-bit	4.33	3.62	4.52	3.69	3.68	4.26	4.70	4.54
43	/uwo/seg3d/bone/bone_subxyz.n26c10	3D/26C	983k	8-bit	3.79	3.24	4.21	3.57	2.91	3.64	4.16	4.38
44	/uwo/seg3d/bone/bone_subxy.n26c10	3D/26C	1950k	8-bit	3.46	2.88	3.53	2.96	2.79	3.21	3.39	3.41
45	/uwo/seg3d/bone/bone_subxyz_subxy.n26c100	3D/26C	246k	8-bit	3.94	3.36	4.24	3.51	3.41	3.70	4.26	4.02
46	/uwo/seg3d/bone/bone_subxyz_subx.n26c100	3D/26C	492k	8-bit	3.72	3.17	3.95	3.31	3.13	3.49	4.03	3.79
47	/uwo/seg3d/bone/bone_subxyz.n26c100	3D/26C	983k	8-bit	3.46	3.04	3.56	3.12	2.58	3.00	3.35	3.42
48	/uwo/seg3d/bone/bone_subxy.n26c100	3D/26C	1950k	8-bit	2.73	2.37	3.03	2.60	2.10	2.30	2.81	2.76
average:					3.81	3.43	3.84	3.36	3.56	3.91	4.71	4.52